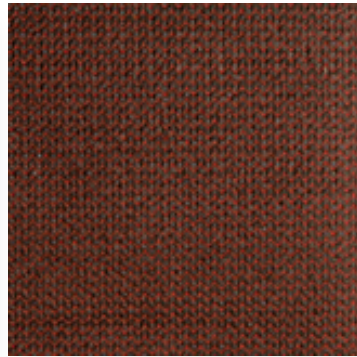


MULTIKNIT / DRI-Z



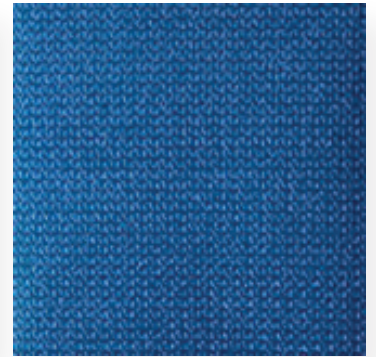
Sahara Sand



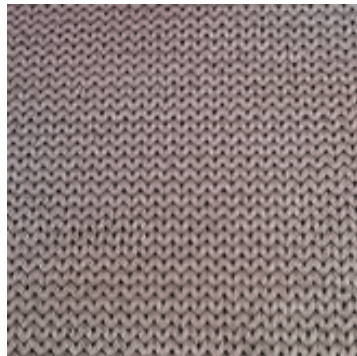
Chocolate



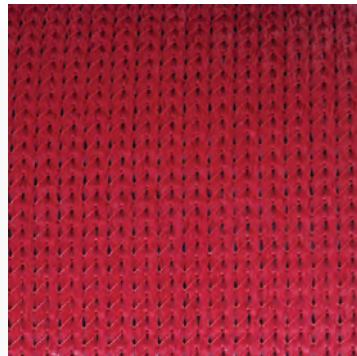
Silver



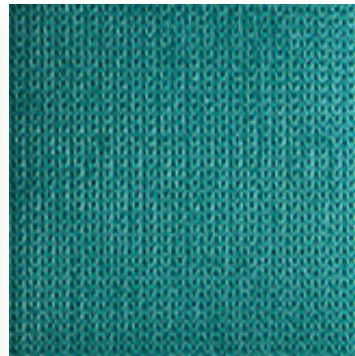
Royal Blue



Terracotta



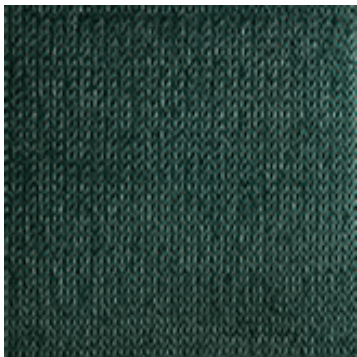
Red



Turquoise



Charcoal



Rain Forest Green

FICHE TECHNIQUE

DriZ est un tissu waterproof résistant à toutes les conditions climatiques. Ce tissu est constitué d'un tissu d'ombrage tressé en polyéthylène haute densité et d'une couche laminée protectrice de polyéthylène basse densité assurant l'étanchéité. Ce tissu est recommandé lorsque vous souhaitez une protection combinée solaire et pluviale, idéal dans des conditions climatiques tropicales, par exemple.

Fabric	Knitted shade fabric of High Density Polyethylene - SABS Quality approved
Coating	Ultraviolet stabilised polyethylene
Mass	280 grams per square metre
Width	3,0 metre
Roll Size	33 metre (Standard lengths)
Cut Lengths	Supplied to order
Roll Length	16 gauge mono yarn and tape
Breaking Force	616 N (Warp)
	1143 N (Weft)
Tear Strength	50kg Warp (min)
	120kg Weft (min) Test method 50mm strips extended to point of failure
Tear Strength	250 kPa (min) Test method SABS 1703
	2500 kPa AS 2001.2.4-1990 method B
DriZ has been tested by CSIR under wind conditions in excess of 200km per hour	

GAMME DE COULEURS



Couleur	Shade Factor	UV Factor
Royal Blue	91%	96%
Rain Forest Green	93%	97%
Silver	93%	94%
Desert Sand	88%	94%
Rust Gold	94%	97%
Terracotta	91%	95%
Red	86%	93%
Charcoal	96%	97%
Chocolate	92%	93%
Gamme de couleurs non standard		
Mulberry	94%	97%
Navy Blue	94%	97%
Laguna Blue	95%	96%
Mist Green	92%	95%
Champagne	83%	93%
Turquoise	86%	92%